

FARM RETIREMENT AUCTION

THURSDAY, MARCH 5 | 10AM 2020

From Main Street in Aneta, ND on the east edge of town, 1-3/4 mile southeast on County Road 7, followed by 3/4 mile east on County Road 7, north side of road; or from Sharon, ND, 4 miles north on County Road 7, followed by 2 miles west on County Road 7.



AUCTIONEER'S NOTE: Major equipment begins selling at 11AM. Live online bidding available on major equipment. Registration, terms, & details at SteffesGroup.com.

4WD TRACTORS

2004 New Holland TJ500, deluxe cab, buddy seat, powershift, 4 hyd., return flow, front & rear diff lock, Trimble EZ-Steer w/150 display, 520/85R46 triples, 3,260 hrs., S/NZ8F109873
2002 Buhler 2425, deluxe cab, 12 spd., 4 hyd., return flow, front & rear diff lock, 710/70R38 duals, 6,202 hrs., S/ND108663

MFWD & 2WD TRACTORS

2003 Buhler 2160, MFWD, CAH, powershift, Super Steer, 4 hyd. 3 pt., front suitcase weights, 1000 PTO, diff lock, 380/85R30 front tires, 380/90R46 hub duals, 6,151 hrs., S/N121601
1991 Case-IH 7140, MFWD, CAH, 18/4 powershift, 3 hyd. 3 pt., 1000 PTO, diff lock, 14.9R30 front tires, 480/80R42 hub duals, 11,032 hrs., S/NJJA0033672
1990 Case-IH 685, open station, 8 spd., 2 hyd., 3 pt., 540 PTO, Case-IH 2255 hyd. loader, 7' bucket, 16.6-30 rear tires, 1,614 hrs., S/N27722
1981 John Deere 4440, CAH, quad range, 3 hyd., 3 pt., 540/1000 PTO, 60 Series step, 18.4R38 hub duals, 12,419 hrs., engine has been overhauled, S/N050506RW
1979 John Deere 4440, CAH, quad range, 3 hyd., 3 pt., 540/1000 PTO, 18.4R38 singles, 12,823 hrs., engine has been overhauled, S/N017726R

COMBINE

2013 Case-IH 9230, axial flow, PRWD, Power Plus CVT, AFX rotor, luxury cab, leather w/buddy seat, deluxe controls, HD lateral tilt feeder house, Pro 700 display, 372 receiver w/Nav II controller, integrated auto steer, extended folding high cap. unloading auger w/pivoting spout, independent cross auger controls, 1-5/8" electric adjust sieves, 2 spd. elevator, power fold hopper ext., fine cut straw chopper, rock trap, HID lights, diff lock, heavy duty final drives, (2) sets concaves, HD rear axle, rear trailer hitch, on-board air compressor, Michelin 520/85R42 duals, Michelin 600/65R28 rear tires, 1,596 sep. hrs., 2,483 engine hrs., S/NYDG219851

HEADS

2014 MacDon FD75 flex draper head, 40', Flex Float Technology, single knife drive, hyd. fore/aft, AHH, flip-over finger reel, poly, Case-IH AFX hookups, gauge wheels, slow spd. transport, S/N262144
2013 Case-IH 3020 flex head, 35', single drive, AHH, TerraFlex torsion, finger reel, hyd. fore/aft, 3' cut, poly, Case-IH AFX hookups, S/NYDH220043
2013 Case-IH 3020 flex head, 35', single drive, AHH, TerraFlex torsion, finger reel, hyd. fore/aft, 3' cut, poly, Case-IH AFX hookups, S/NYDH220195
1997 Case-IH 1015 pickup head, Melroe 388 pickup, 11', single pt. hookups, converted to fit Flagship combines, S/NJJC0210102
1997 Case-IH 1015 pickup head, Melroe 388 pickup, 12', single pt. hookups, converted to fit Flagship combines, S/NJJC0210717
1997 Case-IH 1015 pickup head, Melroe 395 pickup, 11', 60-88 Series hookups, S/NJJC213230
1991 Case-IH 1010 pickup head, Pickett 13' pickup, 8-bar, screen bottom, single pt. hookups, converted to fit Flagship combines, S/NJJC0123225

HEADS

1991 Case-IH 1010 pickup head, 30', (2) Elmers 14' pickup, screen bottom, 60-88 Series hookups, S/NJJC124750
IHC 810 sunflower head, 22-1/2", 12" pans, 60-88 Series hookups, S/N37113

SWATHERS

Case-IH 8220 pull-type swather, 25', finger reel, auto fold, wide throat, 540 PTO, S/NCFH0128772
(2) Case-IH 725 pull-type swathers, 25', finger reel, auto fold, wide throat, 540 PTO, S/NCCC0003438, S/NCCC0002245
2002 MacDon 3020 pull-type swather, 25', finger reel, auto fold, wide throat, 1000 PTO, S/N150391
IHC 4000 self-propelled swather, 18', bat reel, Chrysler in-line 6 cyl., S/N1595

AIR SEEDER

2016 John Deere 1890 air seeder, 60', 5-section fold, 10" & 20" space, MudSmith wheels across, full run monitor, John Deere 1910 tow-behind 2-compartment tank, 350 bu., section control, vari-rate control, hyd. fill conveyor, 520/85R42 duals, cart S/N1A81910HJFF765177, seeder S/N1A81890CEF765182

SPRAYERS & SPRAYER TRAILER

2017 Case-IH 4440 self-propelled sprayer, deluxe cab, leather w/buddy seat, 120' boom, 20"/30" space, 1,200 gal. SS tank, AIM Command FLEX, 5-sensor AutoBoom height control, integrated auto steer, Raven Viper 4+ controller, receiver, rear camera system, fresh water tank, SS chemical inductor, 3" front fill, fence row nozzles, traction control, hyd. tread adj., fenders, 380/90R46 tires, 1,000 hrs., S/NYHT045276
2009 Summers Ultimate NT, 100' hyd. boom, 1,600 gal. poly tank, triple nozzle bodies, hyd. pump, foam markers, rinse tank, 3" fill, adj. axles, 380/90R46 tires, S/NIO327
2002 Great Dane single axle dry van trailer, 28', roll up door, spring susp., (2) 1,650 gal. poly tanks, Honda transfer pump, mix cone, 3" plumbing, 11R22.5 tires on steel

TILLAGE EQUIPMENT

2013 Salford I-2100 vertical tillage, 41', 8-wave blades, walking tandems across, weight pkg., 3-bar harrow, rolling baskets, 305/75R22.5 tires on main frame, S/N131498ML
2014 Degelman 7645 land roller, 45', 36" drums, rear fold, light pkg., S/NLR5771
2010 Wil-Rich QX2 field cultivator, 60', 5-section fold, 7" spacing, full floating hitch, double spring, edge-on shanks, 9" knock-on sweeps, gauge wheels, flotation tire pkg., 4-bar harrow, S/N458712
IHC vibrashank cultivator, 30', 3-section fold, walking tandems on main, 3-bar harrow, spring standards, full floating hitch, walking tandems, HD 3-bar harrow, S/NN02400X000365
John Deere 1650 chisel plow, 41', 12" space, 3-section fold, walking tandems across, 3-bar harrow, NH3 nitrolator, carbide NH3 tips, rear hitch, Valmar 2055 granular applicator, ground drive, has original wings to make 60" N01650X001146

TILLAGE EQUIPMENT

Wishek 842T tandem disk, spring cushion gangs, 26", 3-section fold, 11" space, 24" blades, scrapers, HD tandems across, S/N879526
Krause tandem disk, rock flex, 24', 3-section fold, 8" space, scrapers, tandems on main
Case-IH 183 row crop cultivator, 3 pt., 16x30", hyd. flat fold, vibrashank, (4) gauge wheels, rolling shields

SEMI TRACTORS

1989 Peterbilt 379 tandem axle day cab, Cat 3406B, 13 spd., air susp., engine brake, diff lock, single aluminum fuel tank, 250" WB, full poly fenders, aluminum headache rack, 11R22.5 tires, aluminum front & steel rear rims, shows 913,035 miles
1988 Peterbilt 379 tandem axle day cab, Cat 3406B, 15 spd., air susp., engine brake, diff lock, single aluminum fuel tank, 247" WB, poly 1/2 fenders, 11R24.5 tires on aluminum rims, shows 192,840 miles

BOX TRUCKS & TANKER TRUCKS

1994 Volvo WG64T tri-axle, air up/down rear tag axle w/duals, Cummins, 9 spd., engine brake, spring susp., Reiten aluminum 20'x72" box, hoist, roll tarp, combo gate, electric gate opener, twin aluminum fuel tanks, 11R22.5 tires on steel rims, shows 622,230 miles
1986 Freightliner FLC tri-axle, air up/down rear tag axle w/duals, Cummins, 9 spd., engine brake, spring susp., Reiten aluminum 22'x68" box, hoist, roll tarp, combo gate, electric gate opener, twin aluminum fuel tanks, 295/75R22.5 tires on steel rims, shows 642,807 miles
1983 Chevrolet C70 twin screw, 427 V8 gas, Eaton 5&2 spd., PTO, 19' box, hoist, electric end gate opener, diff lock, 11R22.5 tires, shows 11,970 miles
1975 Chevrolet C65 tag tandem, 366 V8 gas, 5&2 spd., PTO, 18' box, hoist, 10.00-20 tires, shows 99,445 miles
1970 Chevrolet C60 tag tandem, 427 V8 gas, 5&2 spd., PTO, 18' box, hoist, 10.00-20 tires, shows 99,335 miles
1963 IHC 1600 single axle, gas, 4&2 spd., 15' box, hoist, 9.00-20 tires, unknown miles, in good running condition
1990 IHC 9400 tandem axle tanker, 855 Cummins, 9 spd., diff lock, spring susp., 3,200 gal. SS insulated tanker, 285/75R24.5 tires on steel rims, 275,553 miles, used as a water tanker by the Aneta, ND fire department

HOPPER BOTTOM TRAILERS

2008 PLG tandem axle steel hopper bottom, 40'x96"x66", ag hoppers, spring susp., electric roll tarp w/remote, 295/75R24.5 tires on steel rims
2007 Jet 40GT tandem axle steel hopper bottom, 40'x96"x66", ag hoppers, spring susp., electric roll tarp w/remote, 11R24.5 on steel
1989 Timpte Super Hopper tandem axle aluminum hopper bottom, 42'x96"x78", standard hoppers, spring susp., 2-spd. traps, electric roll tarp w/remote, 11R24.5 on steel

DROP DECK, IMPLEMENT & HEADER TRAILERS

1987 Fontaine tandem axle steel drop deck trailer, 48'x96", air susp., sliding winches, no wood on deck, 255/70R22.5 tires on steel rims
Donahue tandem axle implement trailer, 30', double square tube, hyd. jack
Donahue tandem axle implement trailer, 28', double round tube
Lorack tandem axle implement trailer, 28', single tube, hyd. lowering wheels & jack
Mattson tandem axle header trailer, 35', flex bar
(2) Model Industries single axle header trailers, 30'
Shop-built single axle header trailer, 25'

NH3 EQUIPMENT

Nitromaster 8000 NH3 applicator, 52', 5-section fold, 41 shanks, 16" space, tandems across, rear hitch, hyd. nitrolator, S/N1089
(3) 1,000 gal. NH3 tanks on 4-wheel running gears

GRAIN HANDLING EQUIPMENT

2001 Westfield MK130-71 low pro swing hopper auger, 71'x13", hyd. lift, 540 PTO, S/N135214
1993 Westfield MK130-71 swing hopper auger, 71'x13", hyd. lift, 540 PTO, S/N62302
Feteri 1271 mechanical drive swing hopper auger, 71'x12", hyd. lift, 540 PTO, S/N127086005
1996 Westfield WR100-61 load out auger, 61'x10", 540 PTO, hyd. winch lift, on transport, S/N87295

GRAIN HANDLING EQUIPMENT

Feteri 746 load out auger, 46'x7", 5 hp, 1 phase, on transport, S/N93006G
2006 Brandt 735 load out auger, 35'x7", Honda gas motor, on transport, S/N7766206
Aeration tubing

OTHER EQUIPMENT

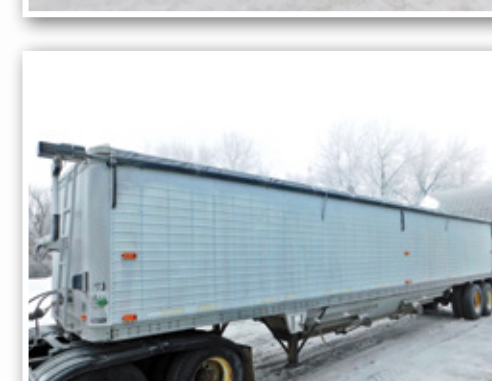
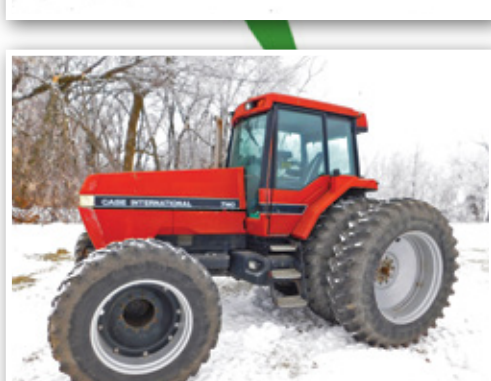
Crown 410 fork-style rockpicker, offset hitch, hyd. dump
Woods pull-type rotary mower, 6', 540 PTO, S/N1806
(3) Poly canola rollers, adj. hitch, transport wheels
Pallet forks, 48' forks, fits Case-IH 2255 loader
Steel flatbed, 25'x102", was mounted on truck for water tender

PICKUP

2001 Chevrolet 2500HD, ext. cab, 6.0L, automatic, 4WD, 6' box, 247,704 miles, New transfer case

TIRES & PARTS

Goodyear set of (4) 520/85R38 tires on rims, fits 4440 sprayer
(2) Case-IH rear axles, spindles & tires, tires have fluid in them, off 2588 combine
Case-IH corn sieve out of 2588 combine
Asst. Case-IH concaves for 88 Series combine
Approx. (50) Yetter floating trash whippers for John Deere 1890 air drill, used on 50 acres



TIM BRAKKE | Scott Huso, 701.789.9800

At Steffes Group, 701.237.9173,
 contact Brad Olstad, 701.238.0240
 or Tadd Skaurud 701.729.3644



SteffesGroup.com

Steffes Group, Inc., 2000 Main Avenue East, West Fargo, ND 58078 | 701.237.9173

Scott Steffes ND81, Bob Steffes ND82, Brad Olstad ND319, Max Steffes ND999, Justin Ruth ND2019



TERMS: All items sold as is where is. Payment of cash or check must be made sale day before removal of items. Statements made auction day take precedence over all advertising. \$35 documentation fee applies to all titled vehicles. Titles will be mailed. Canadian buyers need a bank letter of credit to facilitate border transfer.